

Prologis Earth City Industrial Center

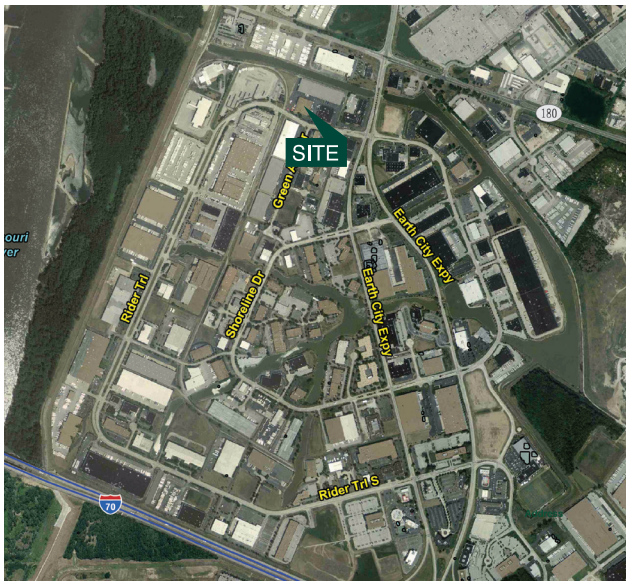
Building 9

3,602 & 5,318 SF Industrial Space For Lease

13795 Rider Trail North, Suites 102 & 106, Earth City, Missouri 63045



PROLOGIS



location

- Desirable Earth City location
- Easy access to I-70, I-270 and I-370
- Seven miles to Lambert – St. Louis Int'l Airport

facility

- 3,602 & 5,318 SF available
- 24' x 36' column spacing
- 21' clear height
- 2 (10'x10') loading docks
- 1 (10' x 16') drive-in door
- T-8 lighting

rental rate

- \$7.00/sf MG

Cassidy Turley

Ed Lampitt
ed.lampitt@cassidyurley.com
ph +1 314-746-0383
fax +1 314-862-1648
7700 Forsyth Boulevard
9th Floor
St. Louis, MO 63105 USA

Cassidy Turley

Matt Eastin
matt.eastin@cassidyurley.com
ph +1 314-746-0350
fax +1 314-862-1648
7700 Forsyth Boulevard
9th Floor
St. Louis, MO 63105 USA

**Cassidy
Turley** / Commercial
Real Estate Services

Prologis Earth City Industrial Center

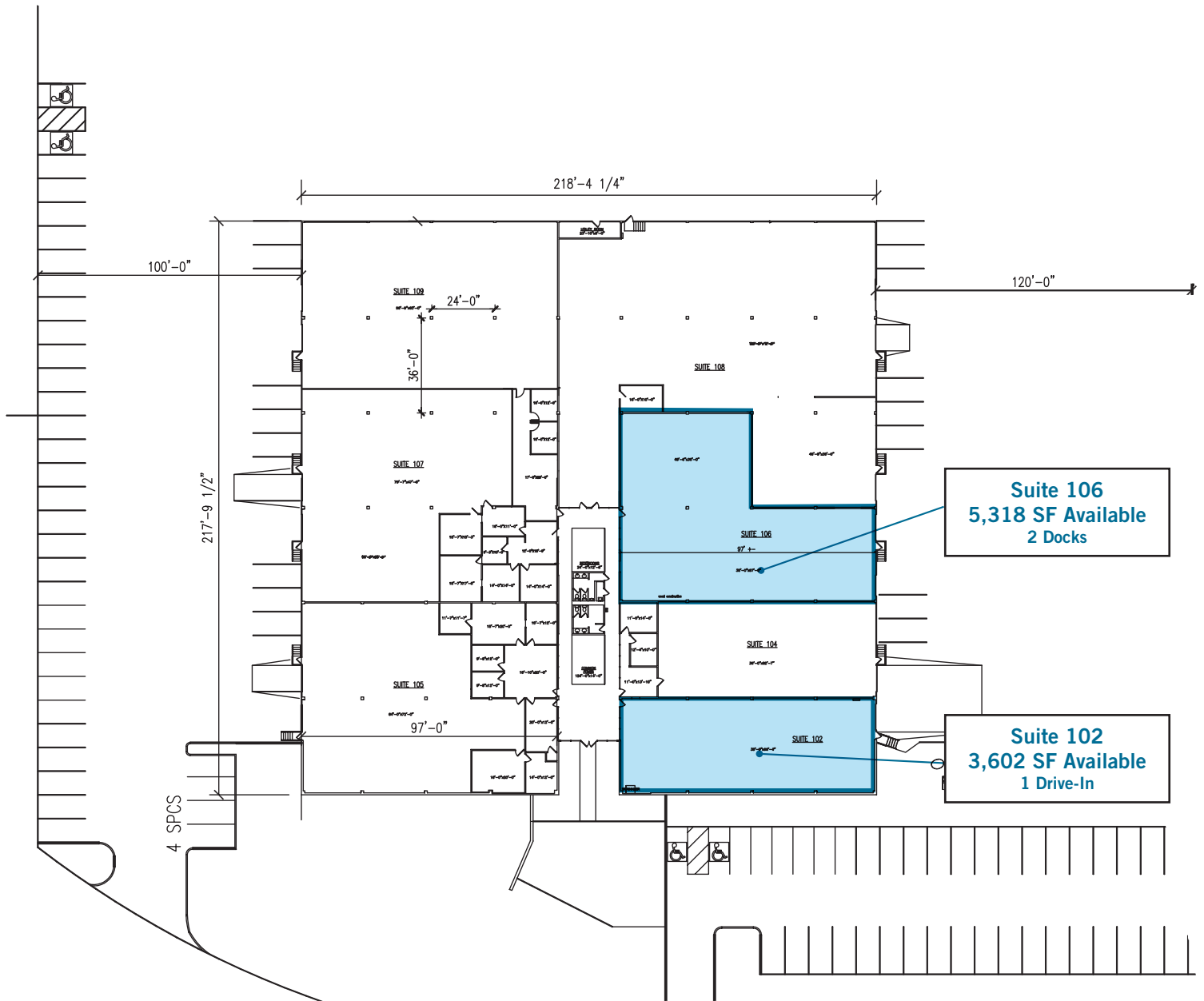
Building 9

3,602 & 5,318 SF Industrial Space For Lease

13795 Rider Trail North, Suites 102 & 106, Earth City, Missouri 63045



PROLOGIS



Cassidy Turley
Ed Lampitt
ed.lampitt@cassidyurley.com
ph +1 314-746-0383
fax +1 314-862-1648
7700 Forsyth Boulevard
9th Floor
St. Louis, MO 63105 USA

Cassidy Turley
Matt Eastin
matt.eastin@cassidyurley.com
ph +1 314-746-0350
fax +1 314-862-1648
7700 Forsyth Boulevard
9th Floor
St. Louis, MO 63105 USA

**Cassidy
Turley** Commercial
Real Estate Services